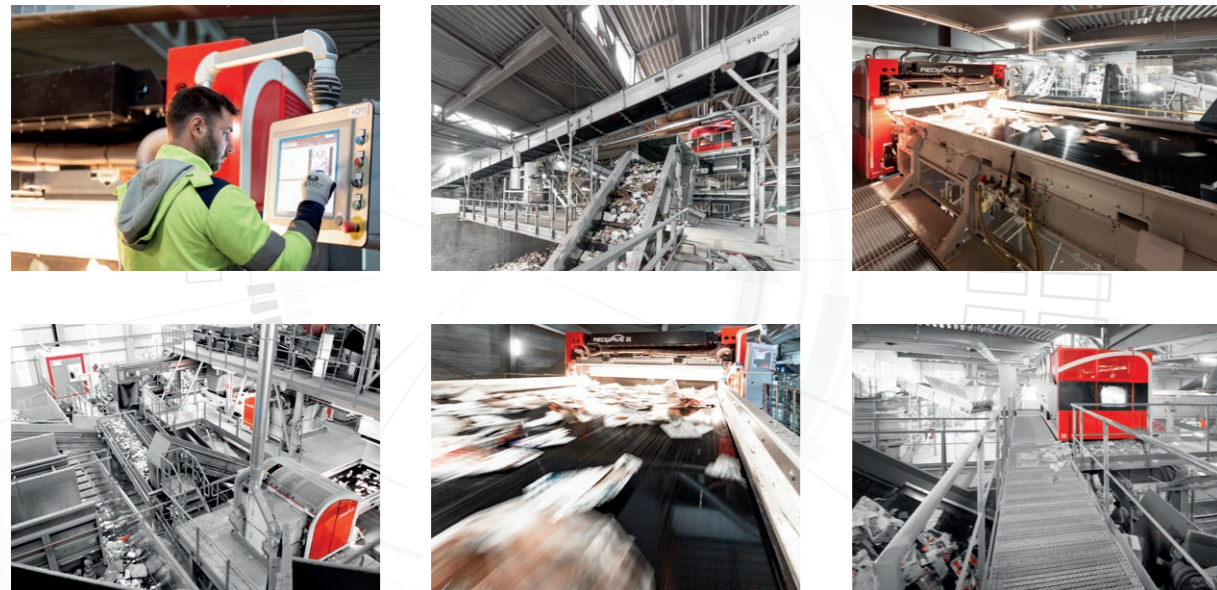




PAPER SORTING



... the quality you need
... the solution you want
... the service you deserve

The partner who
accompanies you!



LOCATIONS



1 HEADQUARTERS AUSTRIA

REDWAVE
office@redwave.com

2 SUBSIDIARY GERMANY

REDWAVE Waste GmbH
office-germany@redwave.com

3 SUBSIDIARY USA

REDWAVE Solutions US LLC
office-us@redwave.com

4 SUBSIDIARY SINGAPORE

REDWAVE Solutions Pte. Ltd.
office-singapore@redwave.com

5 SUBSIDIARY CHINA

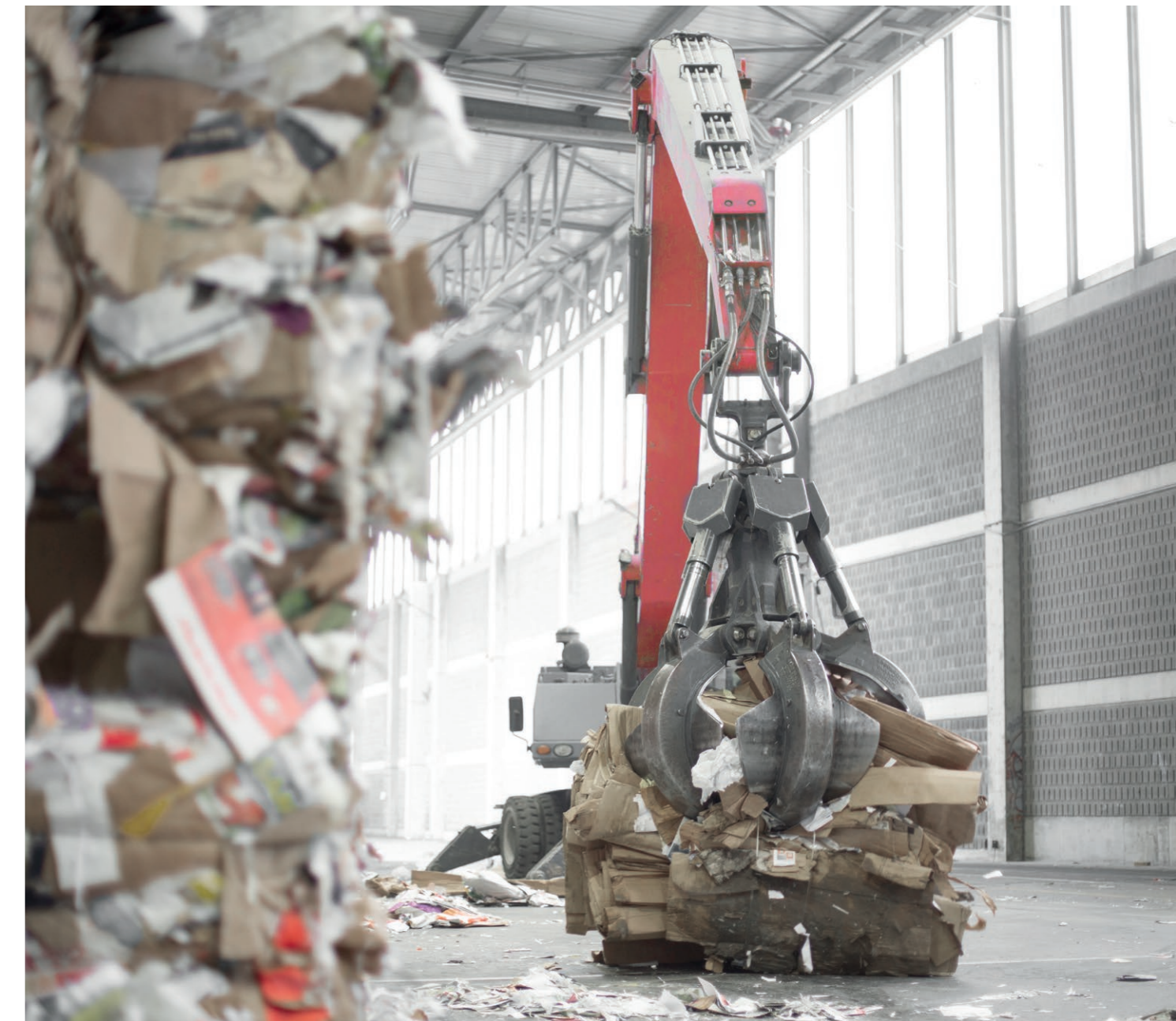
REDWAVE Environmental Science &
Technology (Shanghai) Co. Ltd.
office-china@redwave.com



REDWAVE, a division of BT-Wolfgang Binder GmbH, Wolfgang Binder Str. 4, 8200 Eggersdorf bei Graz, Austria
Tel.: +43 3117 25152 2200, E-Mail: office@redwave.com, www.redwave.com

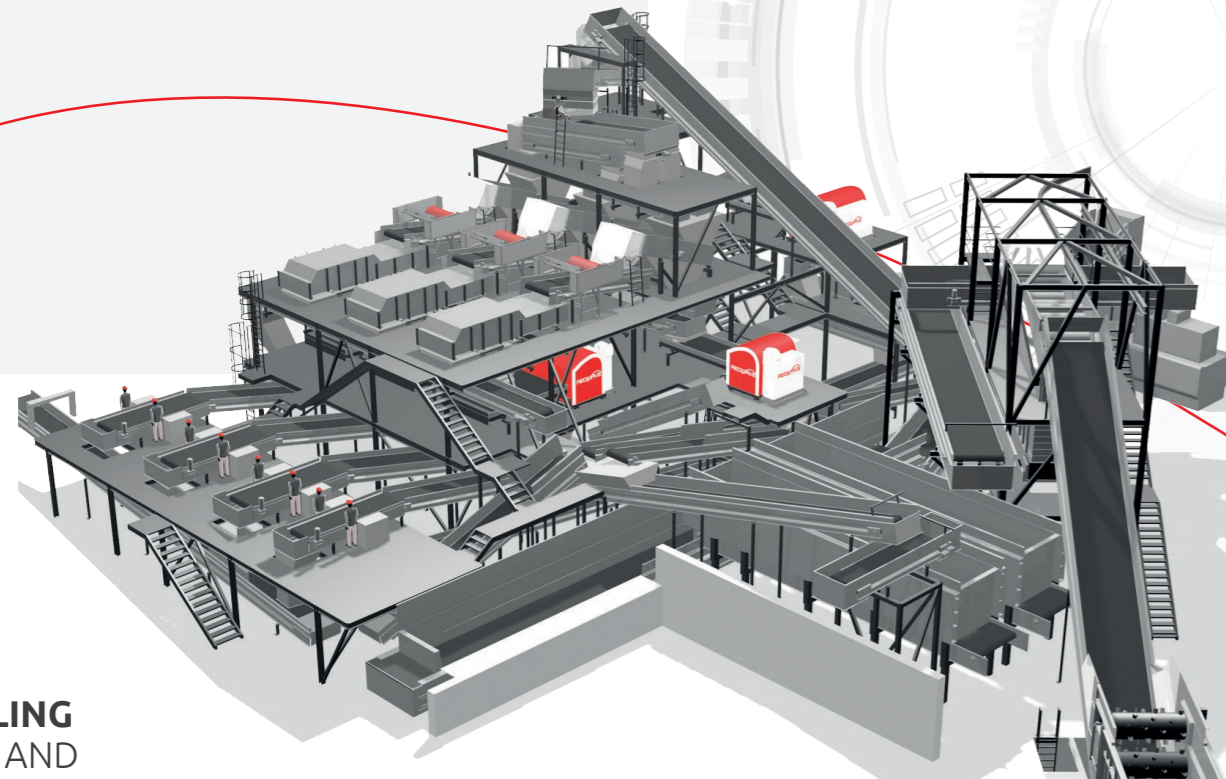
PAPER SORTING

PLANT SOLUTIONS
SENSOR-BASED SORTING MACHINES



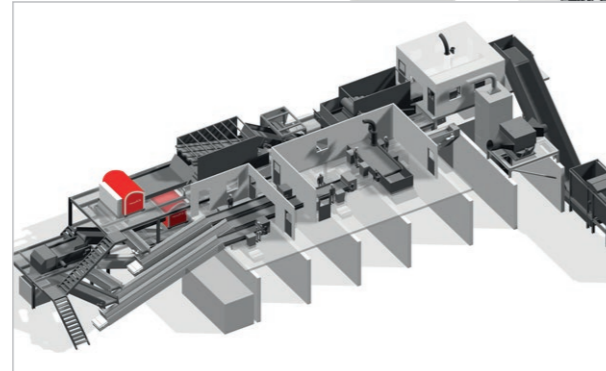
designed by BTMCI | RED-021-155



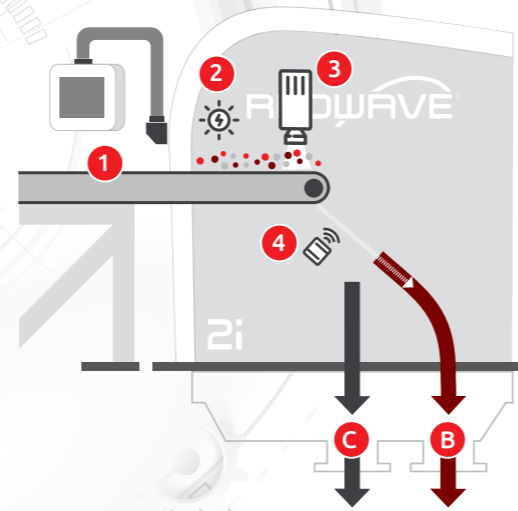


PAPER RECYCLING COMPETENCES AND TECHNOLOGIES:

- FEEDING SYSTEM
- SEPARATION OF OCC (OVERSIZE CORRUGATED CARDBOARD)
- SEPARATION OF FINE MATERIALS
- CONVEYING TECHNOLOGY
- REDWAVE SENSOR BASED SORTING TECHNOLOGY
- PRESSING TECHNOLOGY
- DEDUSTING AND PNEUMATIC SYSTEMS



SENSOR-BASED SORTING MACHINES



OPERATIONAL PRINCIPLE

- 1 Acceleration belt conveyor
 - 2 Light source
 - 3 Camera
 - 4 Pneumatically movable valves
- B Eject
C Pass



REDWAVE 2i, is able to obtain valuable paper fractions of the highest purity from waste paper. Both the material and the color can be identified in a single sorting process. Different material classes such as unprinted and printed cardboard boxes, office paper, magazines, newspapers, Tetra, kraft paper, thermal paper, plastics, etc. are identified by REDWAVE 2i.

HIGHLIGHTS

- **COMPLETE MODULE** incl. conveyor belt, blow-out unit and detection system
- **HIGHEST SORTING ACCURACY** at high throughputs with sensor fusion technology
- **HIGH FLEXIBILITY** of the sorting programs
- **USER-FRIENDLY, LOW MAINTENANCE, RELIABLE**
- **4-CHANNEL SORTING** with just one machine (2-way or 3-way system)
- **QUALITY CONTROL SYSTEM**



TECHNICAL DATA

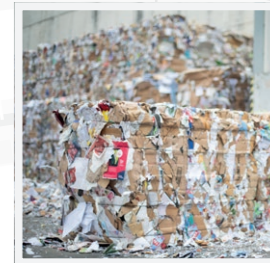
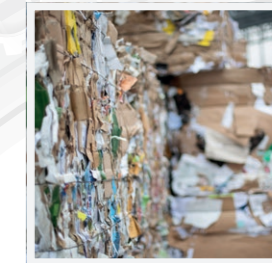
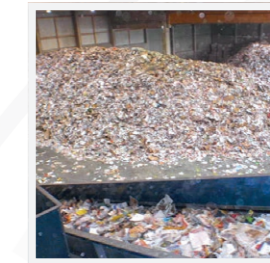
REDWAVE 2i

Equipped with REDWAVE *mate*, the intelligent, digital support

Sorting width 1,400 to 2,800 mm

Sensor systems **Sensor fusion technology**
The sorting criteria such as the type of material or the color are detected by several types of sensors, evaluated and sorted with the highest degree of purity.

Optional **Inductive Metal Detector**
Removal of ferrous and nonferrous metals



AREAS OF APPLICATION IN THE FIELDS OF PAPER SORTING

PAPER GRADES

Recovery of:

- OFFICE PAPER
- NEWS
- MAGAZINES
- CATALOGUES
- WOODFREE PAPER
- KRAFT PAPER

DE-INKING

Removal of:

- BROWN AND GRAY CARDBOARD
- CORRUGATED CARDBOARD
- FOLDED BOXES
- COLOURED PRINTED CARDBOARD
- SYNTHETIC PAPERS
- PLASTIC-LAMINATED PAPERS

NON PAPER

Removal of:

- PLASTICS
- LIQUID PACKAGING BOARD / TETRA
- TEXTILES
- METALS
- FLEXOPRINT NEWSPAPER
- PVC FROM PULPER TAIL SHRED
- AND MANY MORE

REDWAVE *mate* ARTIFICIALLY INTELLIGENT SUPPORT FOR RECYCLING PLANTS AND MACHINES

The digital support REDWAVE *mate* is integrated in the sensor-based sorting machines REDWAVE 2i. In addition, the entire system can be equipped with REDWAVE *mate* in order to continuously visualise the entire sorting process and to measure and monitor the quality. Information is recorded and evaluated during production and enables optimal system and sorting operation. Artificial intelligence increases system availability and sorting efficiency as well as maximising yield and purity. The communication between the sorting machines takes place in real time.



Video



BEST SORTING RESULTS THANKS TO INNOVATIVE TECHNOLOGY

The paper industry has high standards for de-inked paper. In order to provide our customers with the best possible support for future challenges, the REDWAVE 2i was specially developed for the upcoming requirements in the paper industry. Based on the very successful NIR / C, the REDWAVE 2i has been improved and optimised in many ways. REDWAVE continues to rely on

a complete solution, so the proven combination of sorting system and innovative feeding technology can be used in the future. Furthermore, the REDWAVE 2i offers the necessary prerequisites for future developments in the area of Industry 4.0 and thus becomes a future-oriented solution for the upcoming requirements and needs of the paper industry.

