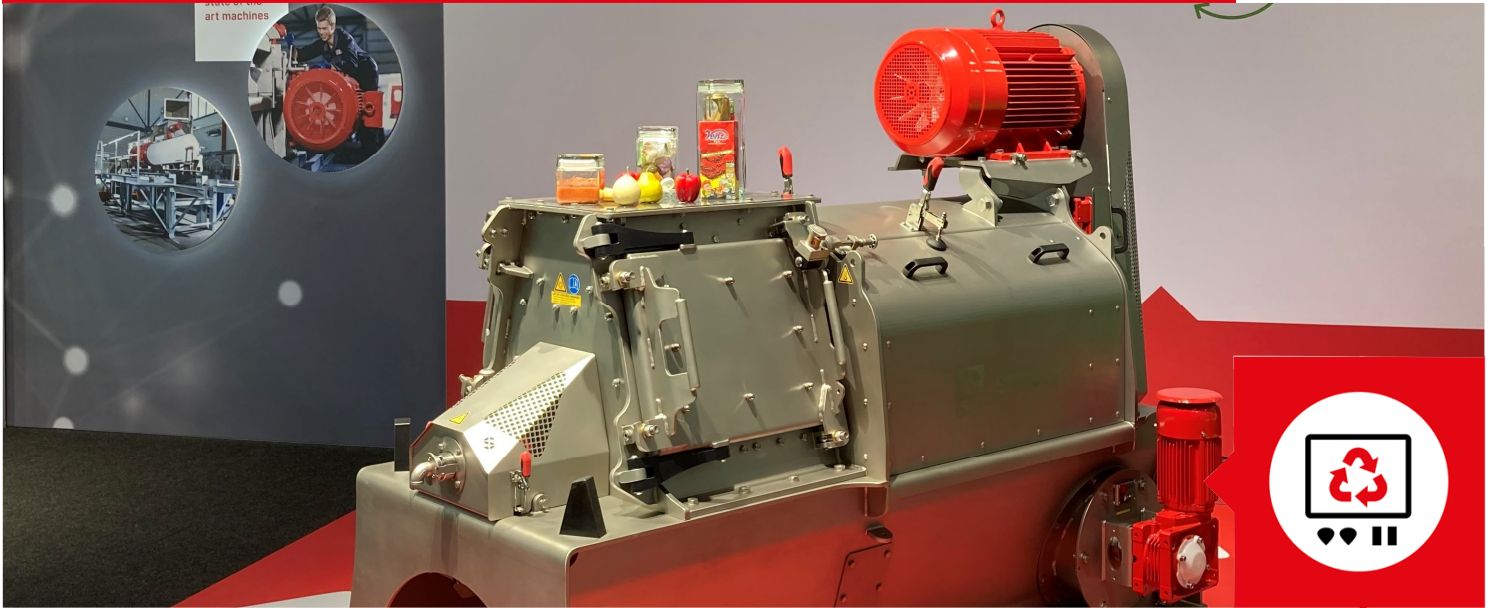


DEPACKAGING



SMIMO80

The SMIMO80 is perfect for separating foodstuffs (supermarket returns and/or residual streams from food production) from its packaging with the organic part being finely cut or ground. The SMIMO80 is a machine that can process large quantities up to 10 m³ per hour. The machine is fitted for separating both dry and moist product.

- ▶ Packaging remains large and the organic matter is finely ground ▶ Rotating filter drum
- ▶ Feeding large products is possible ▶ Feeding liquid is possible
- ▶ The large filter surface and filters can be replaced easily ▶ Fully stainless steel
- ▶ Low revolutions of the rotor shaft create less wear ▶ Service hatch for easy access to axle and filters
- ▶ Tool included to manually rotate the main axle for easy cleaning and maintenance



smicon
ENGINEERING YOUR PROCESS

SMIMO80

TECHNICAL DATA

Dimensions

Machine general	2600x1250x2100 mm (LxWxH)
Infeed	565x350 mm (LxW)
Outfeed organic	1385x660 mm (LxW)
Outfeed packaging	660x325 mm (LxW)
Transport dimensions	2800x1600x2150 mm (LxWxH)
Transport volume	10 m ³
Clear zone	4000x2250 mm
Filter surface	2,2 m ²
Filter mesh size	Ø 8/10/12/15/20/25 mm

Weight

Weight	3200 kg
Floor load per foot	11,6 kN
Transport weight	3400 kg

Drive

Power main axle	15/22/30/37/45 kW
Power filter drum	0,18 kW
RPM main axle	700 RPM
RPM filter drum	0,5 RPM
IP rating	IP66

Product information

Capacity	0-10 m ³ /hour
Product temperature	1-70 °C

Liquid feed

Connection	1" BSP
Temperature	1-70 °C
Maximum pressure	5 bar
Maximum capacity	18 m ³ /hour
Maximum fouling	Ø 2 mm

Other specifications

A-weighted sound pressure level	80 dB
C-weighted instantaneous sound pressure	<130 dB

Accessories

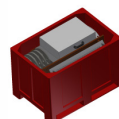
Infeed funnel



Frame



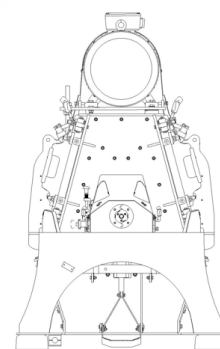
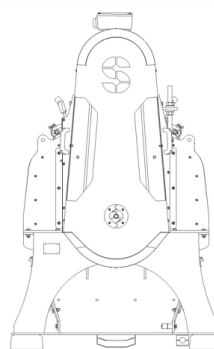
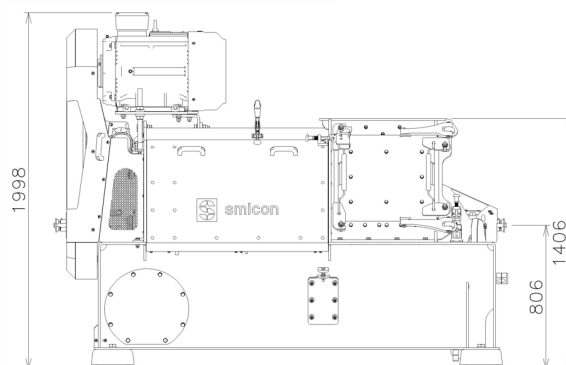
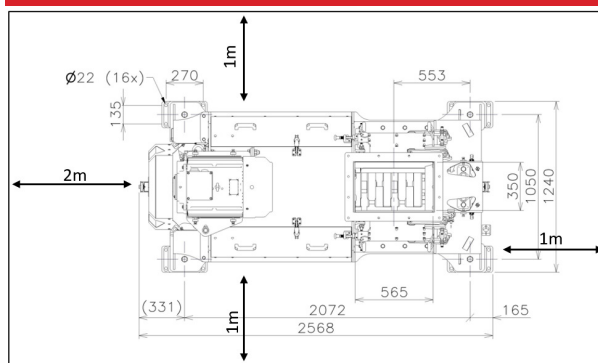
Service box



Infeed bunker + infeed screw



Clearance area and illustrations



All data are without accessories and specifications depend on used products

Smicon can deliver machines inclusive of controles, assembly, turnkey and service plan