



shredding technology

The reliable brand!



**RELIABLE SHREDDING SYSTEMS
FOR SECURE DOCUMENTS AND DATA DESTRUCTION**






RELIABILITY FOR MANY YEARS




UNTHA data destructors are comparable to the red piranha. This fish has a terrible reputation as a brutal killer and remorseless killing machine that relentlessly attacks all living beings that cross its path. UNTHA data destructors also mercilessly and uncompromisingly destroy all documents and data which need to be disposed off in a reliable, quick and thorough manner. Moreover, the robust machine design in combination with highly efficient cutting systems ensures maximum reliability.

All UNTHA data destructors are DIN 66399-certified, and our customers thus have the unrestricted assurance that the required security classifications are met to 100%.

SECURITY CLASSIFICATIONS, SECURITY LEVELS AND DATA CARRIERS PURSUANT TO DIN 66399

SECURITY CLASSIFICATION 1		SECURITY CLASSIFICATION 2		SECURITY CLASSIFICATION 3	
Regular security requirements for internal data		Regular security requirements for confidential data		Very high security requirements for particularly confidential and secret data	
Security level 1		General data and data carriers			
Security level 2		Internal data			
Security level 3		Sensitive, confidential and personal data			
Security level 4		Particularly sensitive data			
Security level 5		Secret data			
Security level 6		Secret data subject to extraordinary security standards			
Security level 7		Top secret high-security data			

P	Information representation in original size	O	Information representation on optical data carriers	H	Information representation on hard drives with magnetic data carriers
					

F	Information representation reduced in size	T	Information representation on magnetic data carriers	E	Information representation on electronic data carriers
					

FOR EVERY REQUIREMENT THE RIGHT SOLUTION



RS30

4-shaft shredding system



RS40

4-shaft shredding system



RS50

4-shaft shredding system



RS60

4-shaft shredding system



RS100

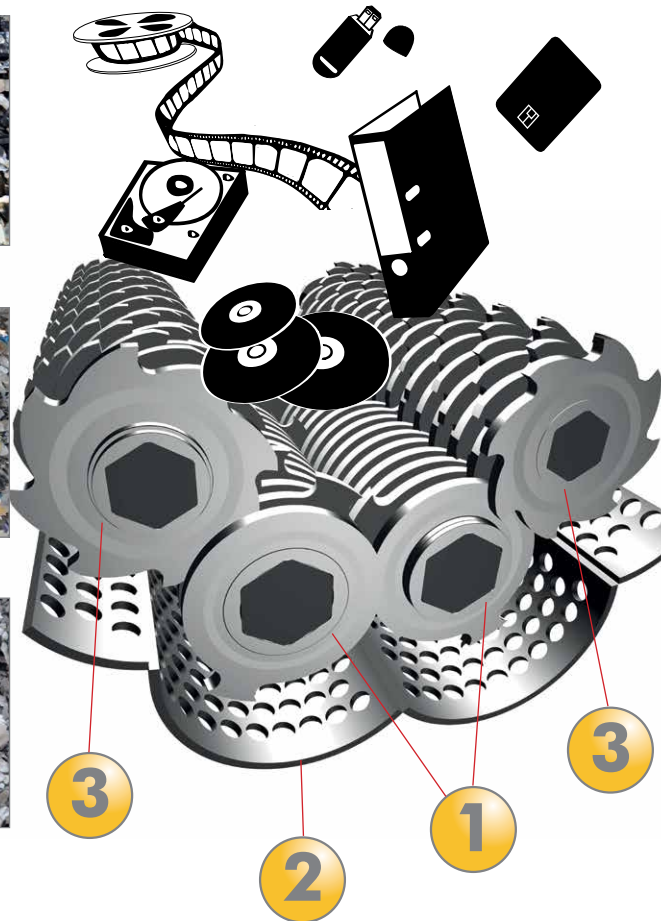
4-shaft shredding system

TECHNICAL DATA	UNIT	RS30	RS40	RS50	RS60	RS100
Drive power	kW	22	30/37/44	60	74/90	110/150
Throughput	kg/h	up to 500	up to 2.000	up to 3.000	up to 5.000	up to 8.000
Cutting system opening	mm	450 x 560	750 x 700/960 x 700	1.250 x 700	1.200 x 700	1.200/1.500 x 1.020
Weight	kg	1.100	1.700–2.400	3.600	6.000	9.000–10.000

*) Indicated throughput values are guide values only.
These depend on the condition of the infeed material, the cutting unit configuration, the screen size, the machine configuration, etc.

A THOUSANDFOLD PROVEN UNTHA 4-SHAFT TECHNOLOGY

After the material to be shredded has been drawn into the main cutters (1), it is both pre-shredded and re-shredded in a single pass. Material that does not fall through the screen (2) is transferred to the secondary cutters (3) and moved back up and fed back into the cutting chamber for re-shredding. The screen determines the size of the final fraction.



THE RELIABLE ALTERNATIVE TO FAILURE-PRONE 1-SHAFT SHREDDING SYSTEMS



WHEN OTHER SHREDDING SYSTEMS FAIL!

The reliable and very robust UNTHA four-shaft shredders have proven themselves over decades and were developed specifically for a wide range of applications for documents and data destruction. The machines can be operated as a stand-alone solution or integrated into comprehensive plants, where they are often a favorite choice because of their compact design.

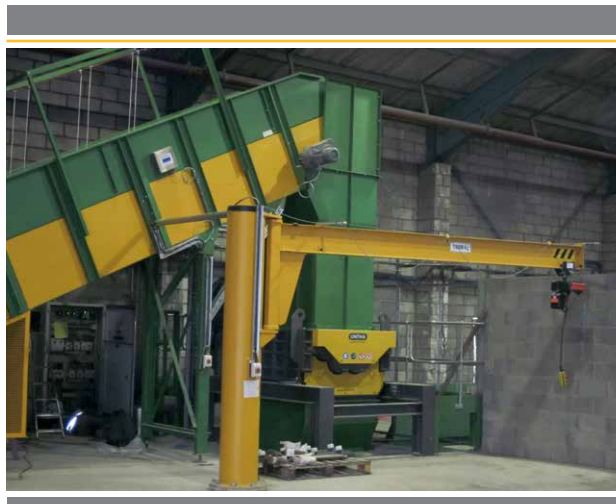
High availability and process security, functional design and unique productivity are the hallmarks of these machines.

QUALITY FEATURE	BENEFIT
Slow-running cutting system	<ul style="list-style-type: none"> > high resistance against non-shreddable items and long service life of the machine > low dust generation and vibrations > risk of fire nearly excluded
Low-wear cutting system	<ul style="list-style-type: none"> > very high life-expectancy, up to 11,000 operating hours > low maintenance requirements > high availability
Simple and compact design	<ul style="list-style-type: none"> > easy integration into a plant > low maintenance costs > little space requirements
No hydraulics required	<ul style="list-style-type: none"> > high resistance against failures > highly reduced maintenance expenditures > reduced energy consumption



SELECTION OF REALIZED PROJECTS

Leading companies already rely on our solution expertise in the documents and data destruction field.



Over 40 years of expertise.
More than 9,000 shredders in daily operation!



SELECTION OF WELL-KNOWN CUSTOMERS

Leading companies already rely on our solution expertise:



SONY

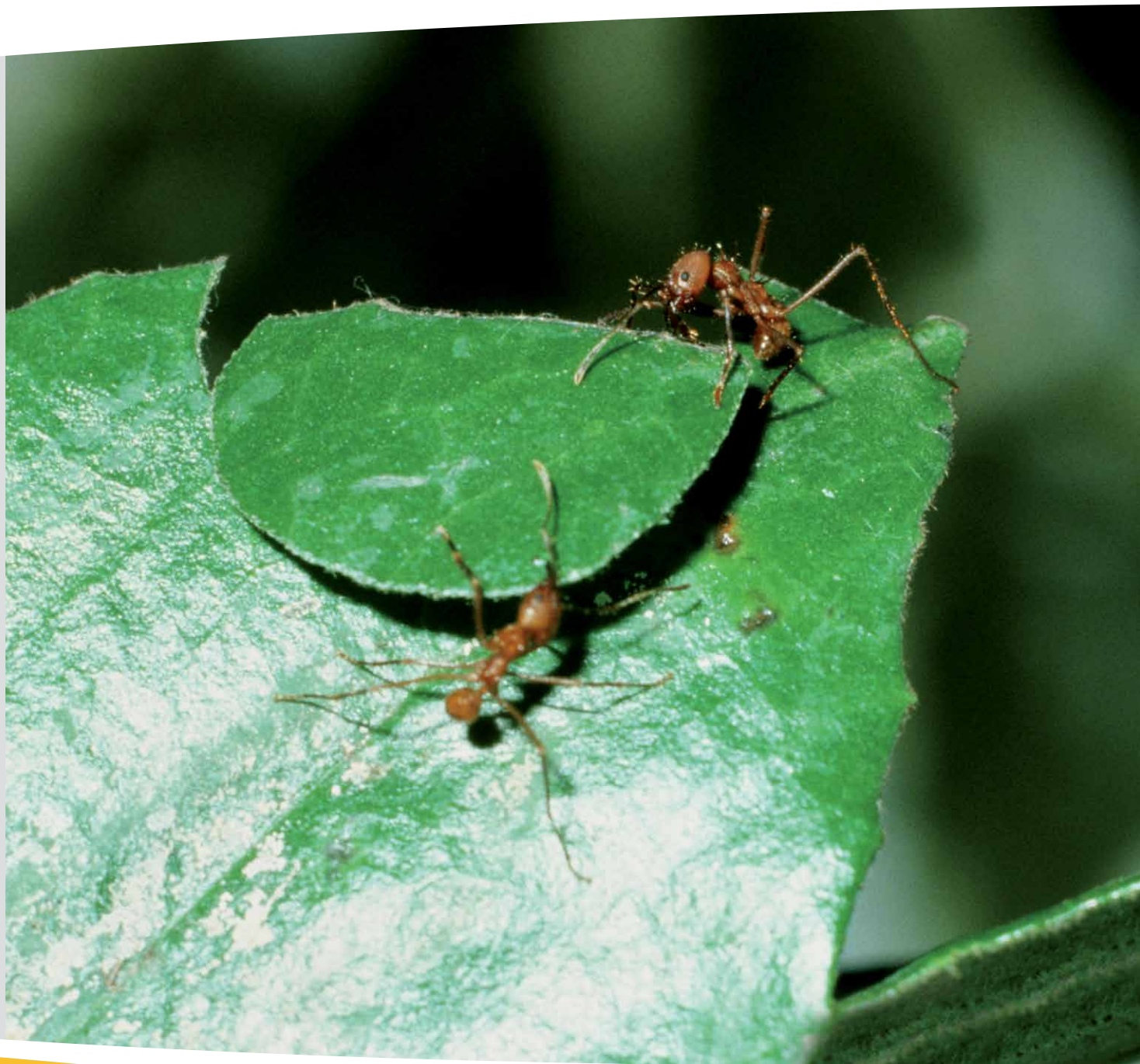


OUR MISSION

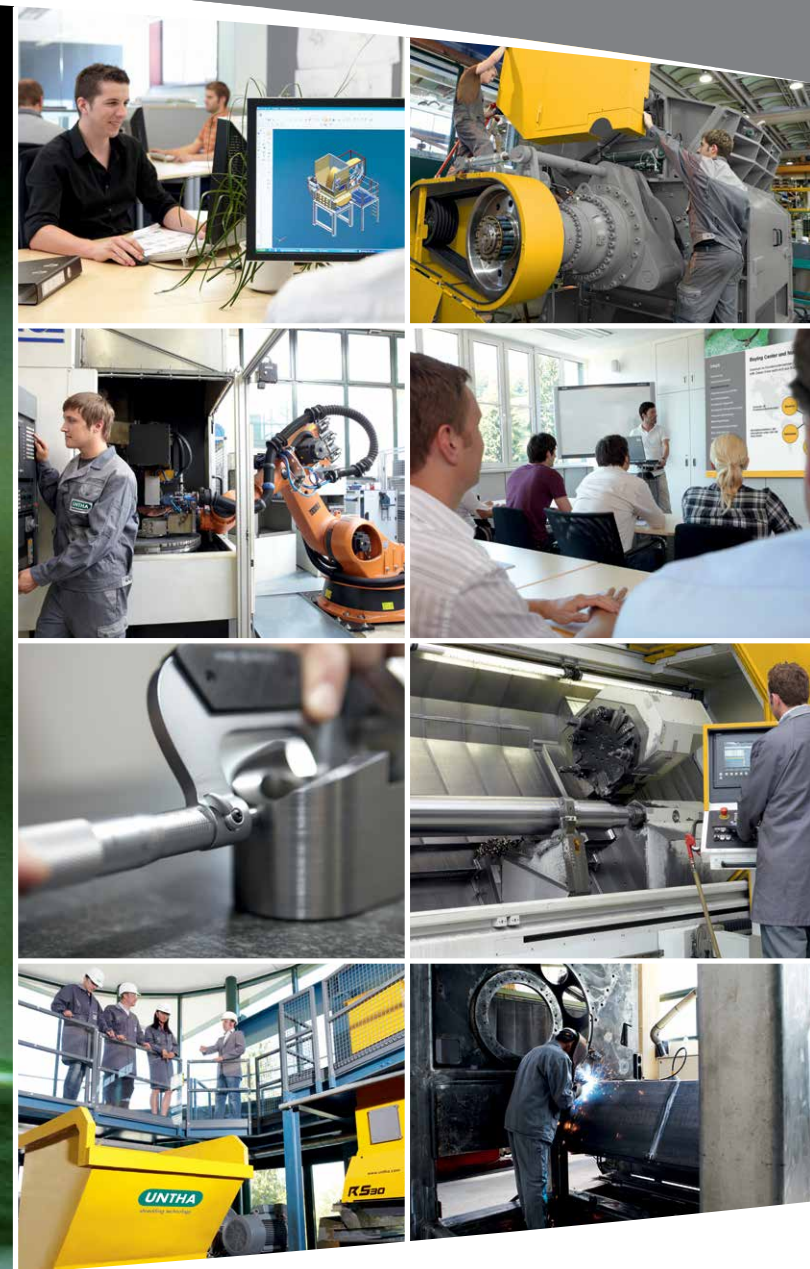
We have been a reliable and expert partner in the shredding industry for more than 40 years. Based on the latest technologies and with the help of our highly qualified staff, we develop and produce innovative and tailored shredding solutions for all applications.

Our every thought and action revolve around our customers and markets. We provide outstanding products and services of the highest quality and reliability and are therefore able to strengthen our customers' market position.

For us, reliability, credibility and a sound approach to business in both practice and theory are the central values that make our success in international markets possible. These values increase our competitiveness and help us to focus on our core competences and on the ongoing improvement of our business processes. The prerequisites for our success are innovative strength, problem-solving skills and our distinctive quality thinking.



THE FACTS SPEAK IN OUR FAVOUR





The reliable brand!



UNTHA shredding technology

Moldanstraße 141
A-5431 Kuchl / Salzburg, Austria
Phone +43 6244 7016 0
Fax +43 6244 7016 1
info@untha.com
www.untha.com



Authorised partner of UNTHA



All revisions reserved. Subject to setting and printing errors.
All illustrations are representative and may deviate from the actual product.
© 03/14 UNTHA shredding technology